



# GAT MONTHLY MEMBERSHIP PROGRESS REPORT

Results as of: 4/30/2024

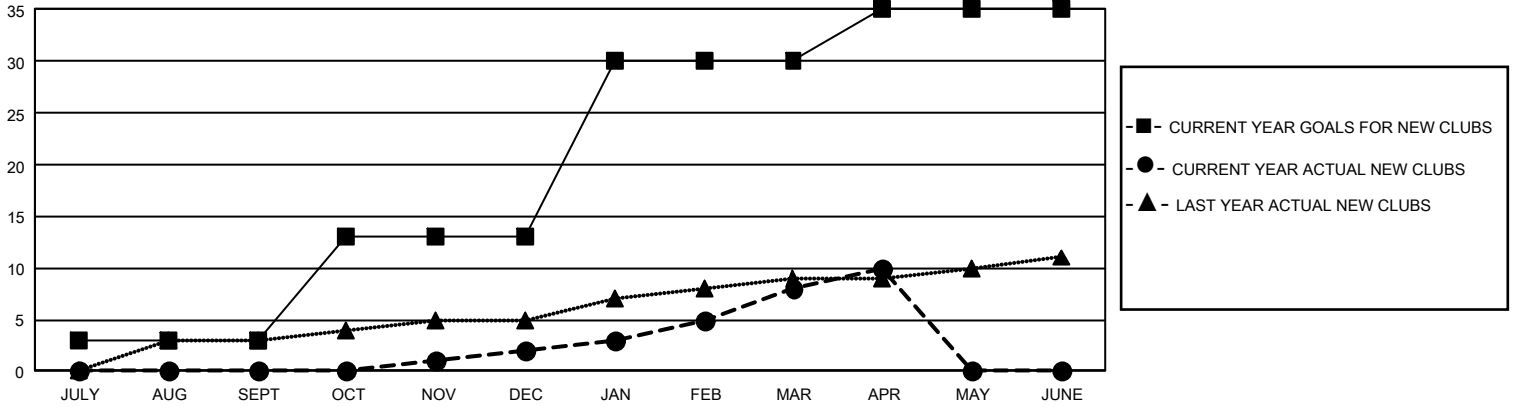
## GMT Constitutional Area 1, Group F

REPORT DOES NOT INCLUDE CLUBS IN UNDISTRICTED AREAS.

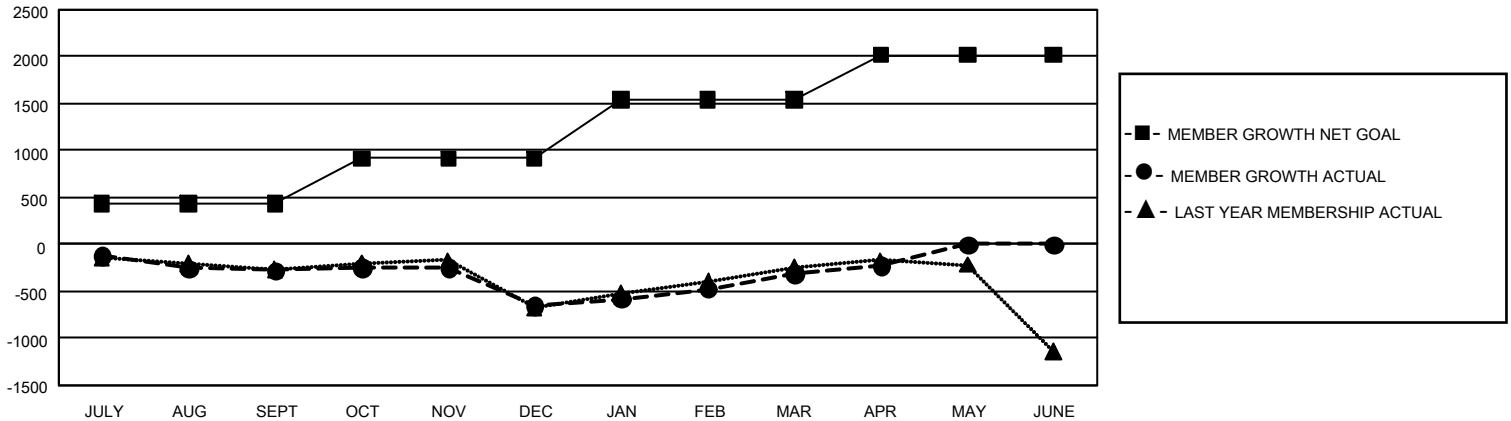
Clubs			
RESULTS FOR 2023-2024			
QUARTER	NEW CLUB GOAL	NEW CLUBS	DROPPED CLUBS
JULY/AUG/SEPT	9	0	7
OCT/NOV/DEC	30	2	16
JAN/FEB/MAR	51	6	5
APR/MAY/JUNE	15	2	1

Members			
RESULTS FOR 2023-2024			
QUARTER	MEMBER GROWTH NET GOAL	MEMBER GROWTH ACTUAL	DROPPED MEMBERS ACTUAL (including transfers)
JULY/AUG/SEPT	431	869	1,036
OCT/NOV/DEC	487	987	1,276
JAN/FEB/MAR	623	1,175	739
APR/MAY/JUNE	475	356	251

GOALS AND ACTUAL NEW CLUBS CUMULATIVE



GOALS AND ACTUAL MEMBERS CUMULATIVE



<b>DROPPED CLUBS: 29</b>  <b>DROPPED MEMBERS</b> DECEASED 486 CLUB CANCELLED 228 OTHER 2,586 <b>TOTAL 3,300</b>	805 CLUBS OF 1,414 ADDED 1 OR MORE NEW MEMBERS	<b>GENDER DISTRIBUTION</b> MALE 23,694 (59.85%) FEMALE 15,873 (40.10%) NON BINARY 0 (0.00%) PREFER NOT TO ANSWER 20 (0.05%)
	<a href="#">CLICK HERE FOR CUMULATIVE MEMBERSHIP DATA</a>	TOTAL FAMILY UNIT MEMBERS 7,548 FAMILY MEMBERS PAYING HALF DUES 3,924